

EXCLUSIVE



VERTICAL SHOWCASES

CIAM

Refrigeration solutions
with a design focus.

The ultimate vertical customisation



Exclusive 74S Custom dim. mm.4000x700x4000H | positive temp. for charcuterie | Premium doors in RAL7021 epoxy powder coated steel | solid sides | interior in RAL7021 epoxy powder coated steel | hook shelves for charcuterie (shelft8)



Refrigerated wall cabinets at positive and low temperature. The Exclusive cabinets are divided into four families: Exclusive 51P with a depth of 50cm, evaporator positioned on the back panel, positive temperature only and standard flush with the cabinet Zero model doors; Exclusive 74P with a depth of 70cm, positive temperature only and standard flush with the cabinet Zero model doors; Exclusive 74S with a depth of 70cm, positive or low temperature and Premium doors; Exclusive MA with a depth of 70cm for meat dry aging and Premium doors.



Detail shelft1, shelft3a, shelft5 type shelves for bottles display | Noir Desir Gres back (cod. GLNDO)

Exclusive



Watch the video



Exclusive 74P Custom dim. mm. 2400x700x3800H | positive temperature with Zero doors coated in satin brass electroplated steel (cod. LGOS) | Gres internal sides and back | standard and shelft4 type shelves with brass finish | no-spot LED strip lighting 3000°K



Exclusive 74P dim. mm. 2400x700x2250H | positive temperature with matt black (RAL7021) Zero doors | Sides with glass window | back in Noir Desir Gres (cod. GLNDO) | shelft1, shelft3a, shelft5 epoxy powder coated RAL7021 | no-spot LED strip lighting 3000°K



Shelft2 shelf type detail

The tanks are monolithic and available in the following standard lengths: 600, 1200, 1800, 2400 (plus sides). The standard sides are solid, but can be supplied in double-glazed glass on request (optional). The shelves are adjustable in height and are made of pressed steel, up to 7 different types of shelves can be supplied as an optional. The standard finish of the internal and external metal sheets is matt black epoxy powder coated steel (RAL 7021). (RAL 7021), other finishes can be requested (optional). Indirect lighting is provided by a 3000°K no-spot LED strip perfectly integrated in the door frame.

Wine Room



Exclusive 74P L2400 positive temperature with Zero doors, exterior in electroplated steel satin-finish brass (cod. LGOS), internal sides, back and bottom shelf in natural grey cardoso stoneware (cod. GLPCGN), shelft1, shelft3b, shelft4 type shelves in brass finish, 3000°K no-spot LED strip lighting.



Pastry Shop



Exclusive 74S (L1200 low temp.) with Premium doors



Exclusive 74S (L1200 positive temp. + L1200 low temp.) with Premium doors



Exclusive 74S (L1200 positive temp. + L1200 low temp.) with Premium doors, RAL9003 epoxy powder coated steel exterior, Premium doors with RAL9003 white screen printing and natural satin brass handle (cod. LO10NSLC), sides with glass window, RAL9003 epoxy powder coated steel interior, shelft5 type glass shelves, Ciam touch Pro panel, 3000°K no-spot LED strip lighting, channeling with glass side.



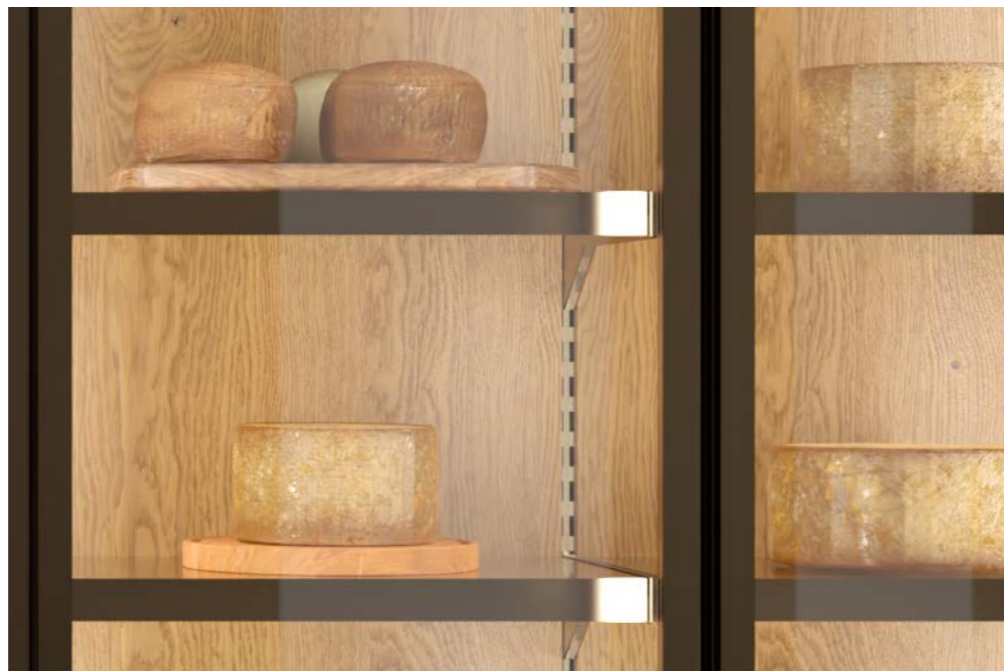


Exclusive 74S (L1200 meats + L1200 meats), exterior in vintage bronze electroplated sheet (cod. LGBV), Premium doors with Moka RAL8019 (cod LVP8019) screen printing and handle in vintage bronze electroplated sheet (cod LGBV), solid sides, interior in satin-finish steel (cod AC07S), Standard stainless steel shelves and hook for hanging charcuterie (shelft8 optional), touch control unit, 3000°K no-spot LED strip lighting, channeling with glass side.



Exclusive MA (L1200 meat dry aging + L1200 meat), exteriors in vintage bronze electroplated sheet (cod. LGBV), Premium doors with Moka RAL8019 (cod LVP8019) screen printing and handle in vintage bronze electroplated sheet (cod LGBV), solid sides, interiors in satin-finish steel (cod AC07S), type Standard shelves and satin-finish steel, touch control unit, 3000°K no-spot LED strip lighting, channeling with glass side.





Back detail in natural oak wood



Detail of internal equipment in electroplated steel Oro24 (cod.LGORO24) and back in polished statuario venato gres (cod. GLBSVL)



Exclusive 74P L2400 temp. positive with Zero doors, exterior and doors in Oro24 electroplated steel (cod LGORO24), sides with glass window, back in polished statuario venato gres (cod GLBSVL), standard type shelves and shelft8 in Oro24 electroplated steel (cod LGORO24), touch control unit, 3000°K no-spot LED strip lighting, channeling with glass side.

Exclusive 74P L1200 temp. positive with Zero doors, exterior and doors in Oro24 electroplated steel (cod LGORO24), sides with glass window, natural oak wood back (cod LERN), shelft7 type shelves in natural oak wood (cod LERN), touch control unit, 3000°K no-spot LED strip lighting, channeling with glass side.



Positive temperature refrigeration and humidity control

Positive and low temperature refrigeration

The Exclusive 51P, 74P and MA cabinets have positive temperature version only, while the Exclusive 74S is available in both positive and low temperature versions.

Humidity control

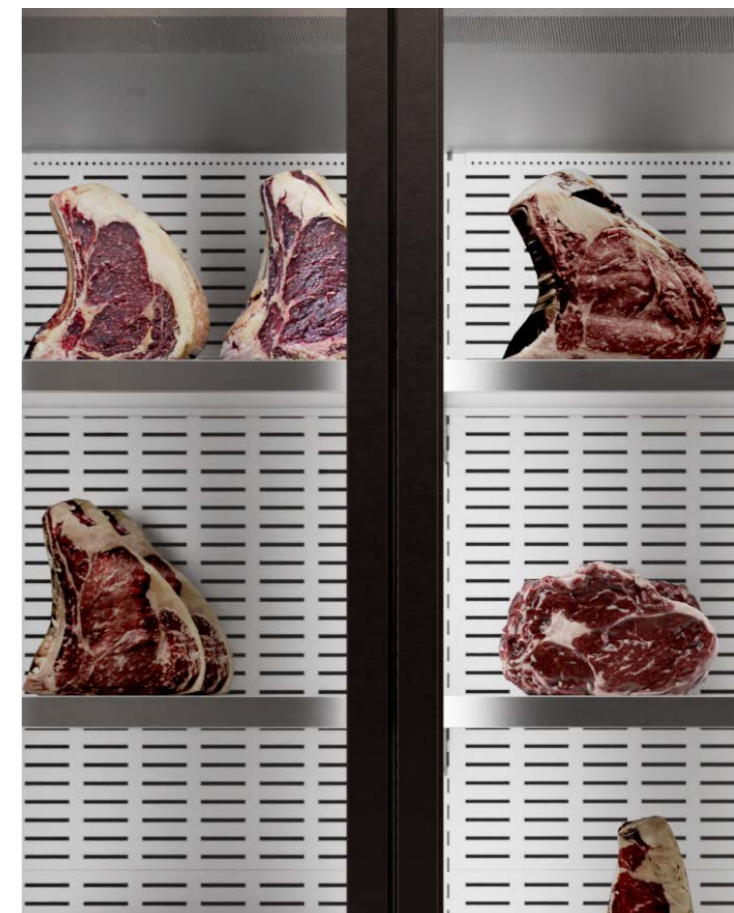
It is possible to have humidity control on the positive temperature cabinets upon request, especially for fresh pastry and praline applications; this is compatible with both the standard touch control unit and the Touch Pro control panel.

Positive and low temperature refrigeration

All cooling systems are cataphoretically treated and guarantee maximum hygiene as the copper tubes and aluminium fins have no rough surfaces.

Wall system ventilated refrigeration

This type of refrigeration is combined with the Exclusive 51P and 74P cabinets and allows maximum customisation of the internal back.



Meat dry aging system



Wall system ventilated refrigeration

Meat dry aging system

The meat maturation system is combined with the Exclusive MA cabinets and is equipped with an integrated humidification and bacterial killing system as well as pre-set aging recipes and the professional Touch Pro panel.

Electronic thermostatic valve

Exclusive MA cabinets have an electronic valve as standard, but it is possible to fit it as an extra optional on all Exclusive versions, especially in the case of connections to cooling system.

Electric defrosting

On request, the refrigeration coil can be defrosted with electric resistances to speed up defrosting times and prevent the formation of ice.

Reverse cycle defrosting

All low-temperature models have ultra-rapid reverse cycle defrosting as standard, the compressor is always external.



Ceiling ventilation system

Top-mounted Ventilated Refrigeration

This type of refrigeration is combined with the Exclusive 74S and Exclusive MA cabinets and ensures the best distribution of cold on all display levels.

Condensate evaporator pan

All Exclusive cabinets can be equipped with a condensate evaporator pan with electric resistances if it is not possible to connect the water drainage system to the room drainage system.

White Tube sanitisation system

Upon request, it is possible to apply the Tube constant sanitisation system, which allows 99% of viruses, bacteria and mould to be eliminated inside the refrigerated compartment.



White Tube, UV sanitisation system

Electronics



3000°K no-spot strip LED lighting.

Lighting

Light is fundamental for a correct spectacular display of the products, which is why Ciam has chosen to install an elegant indirect lighting system with 3000°K no-spot LED strips.

Dimmer to adjust the intensity of the lighting (Option).

Electrical components box

The electrical system is contained in a hermetically sealed box with quick connectors, simplifying installation and maintenance.



Electrical components box

CIAM CONNECT



1. Connectivity

The device allows remote control of the showcase thanks to connectivity with a Sim card that does not require wi-fi or a connection to the premises data.



2. Remote control

Through the Cloud portal you can interact with the showcase, by downloading the operating graphics, monitoring alarms and product performance directly online.



Ciam Touch Pro panel

Ciam Touch Pro panel

Upon request, it is possible to equip Exclusive models with the Touch Pro control panel for professional use that allows you to take full advantage of the refrigerator's performance.

Touch panel

The elegant touch control panel is fitted as standard on all refrigerated modules.

Low consumption electronic fans

Exclusive refrigerated cabinets are equipped with low consumption electronic fans.



Touch panel | Electronic low consumption fans

Doors

Zero doors with double-glazed glass

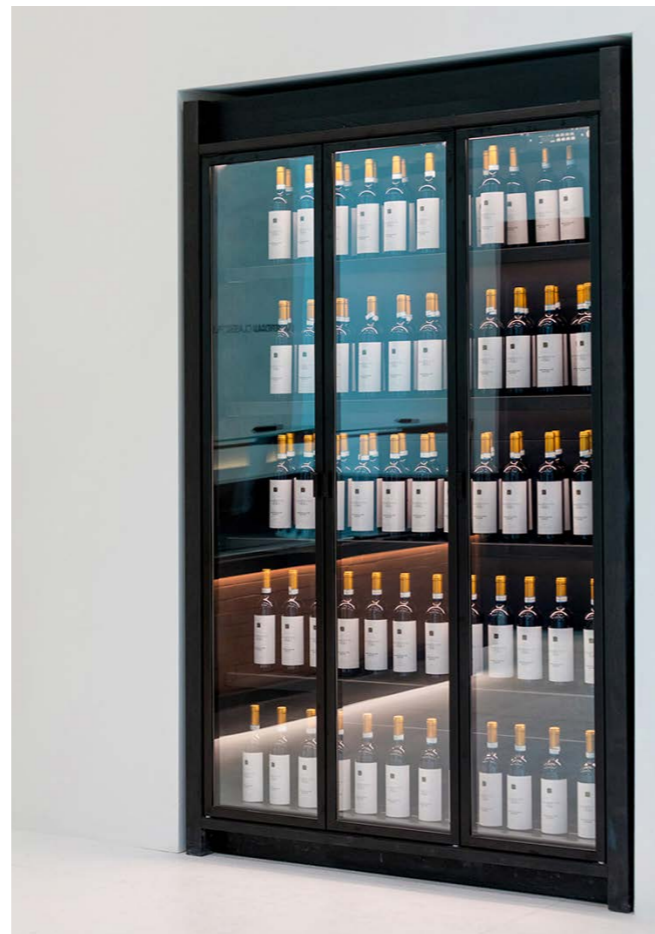
Double-glazed glass with matt black screen printing, base structure and handle epoxy powder coated in RAL7021.

Heated glazing

Positive-temperature refrigerators can be equipped with heated low-emission double-glazed glass, while low-temperature models have heated glazing as standard.

Anti-fog film

All doors are supplied with an anti-fog film as standard. This prevents the inner surface of the double-glazed glass from fogging up when the door is opened.



Zero Doors



Magnetic lock



Premium Doors



Slide Doors



Mechanical lock

Slide Doors

Double-glazed sliding doors on an aluminium track and magnetic stop, frame and handle epoxy powder coated RAL7021.

Premium triple-glazed doors

Triple-glazed glass with matt black screen printing, door opening without mullion, frame and handle epoxy powder coated RAL7021.

Removable magnetic gasket

All doors are equipped with removable magnetic gaskets that ensure that the refrigerated compartment is sealed.

Customisation of door colours and finishes

On request, the frame, handle and screen printing of the doors can be customised in colour and finish.

Mechanical lock

A lock with a key can be installed on request.

Magnetic lock

Upon request, it is possible to insert a magnetic door release using an RFID badge by approaching the sensor integrated in the Zero or Premium door.

Customisation of colours, materials and finishes

Exclusive refrigerated cabinets have been designed for maximum customisation of materials and finishes to meet all stylistic requirements.

Customised dimensions on request

All Exclusive cabinets can be customised in terms of dimensions on request.

Glass sides

Instead of a solid side, it is possible to install a double-glazed side on all Exclusive models.

Flush mounting (only for Zero type doors)

In the case of Zero doors, it is possible to request prearrangement for refrigerator flush with the wall.

Channeling modules in continuity

All Exclusive cabinets of the same family can be channeled to achieve aesthetic continuity.



Flush mounting (only for doors type Zero)



Module channeling continuity



Glass sides

Shelves

Customisation is also possible through the choice of 8 types of shelves, all with adjustable rack and pinion rod systems. The standard finishes and materials are polished steel, matt black epoxy coated steel (RAL 7021) and matt white epoxy powder coated steel (RAL 9010); optional are the RAL colours of your choice, Gres, acrylics and wood where applicable. Indirect lighting is vertical and fitted on the door frame with 3000°K no-spot LED strips.



Standard

Steel profiles for horizontal bottle display; standard finishes: polished stainless-steel, epoxy powder coated steel RAL 7021 or RAL 9010, optional finishes: epoxy powder coating, electroplating.
Dim.: 580x450 mm
Capacity: 30 bottles



Shelf_T1

Steel profiles for horizontal bottle display; standard polished stainless-steel finish, optional finishes: epoxy powder coating, electroplating.
Capacity: 10 bottles



Shelf_T2

Oak shelf with stainless steel inserts for pyramid-shaped bottle display; standard finish: solid natural oak, optional finishes: solid wood on request.
Capacity: up to 15 bottles.



Shelf_T3a

Steel shelf for slightly slanted bottle display; standard finishes: polished stainless-steel, epoxy powder coated steel RAL 7021 or RAL 9010, optional finishes: epoxy powder coating, electroplating.
Capacity: 6 bottles



Shelf_T3b

Steel shelf for slanted bottle display; standard polished stainless-steel finish, optional finishes: epoxy powder coating, electroplating.
Capacity: 6 bottles



Shelf_T4

Tile with metal tubes for bottle display; standard finishes: polished stainless-steel, epoxy powder coated steel RAL 7021 or RAL 9010, optional finishes: wooden or gres back, inserts epoxy powder coating, electroplating.
Capacity: 20 bottles



Shelf_T5 Classic transparent

Glass shelf with steel perimeter frame; standard finish float glass and polished stainless-steel frame, epoxy powder coated steel RAL 7021 or RAL 9010, optional finishes: frame in epoxy powder coated steel or electroplating.
Dim. 580x450 mm
Capacity: 30 bottles.



Shelf_T5 Fumè

Glass shelf with steel perimeter frame; standard finish fumé glass and frame in polished stainless steel, epoxy powder coated steel RAL 7021 or RAL 9010, optional finishes: fumé glass, frame in epoxy powder coated steel or electroplating.
Dim.: 580x450 mm
Capacity: 30 bottles.



Shelf_T6

Tubular steel structure for slanted bottle display; standard finishes: polished stainless-steel, epoxy powder coated steel RAL 7021 or RAL 9010, optional finishes: powder-coating, electroplating.
Capacity: 6 bottles.



Shelf_T7

Shelf in solid natural oak; optional finishes: solid wood on request.
Dim.: 580x450 mm
Capacity: 30 bottles.



Shelf_T8

Hook for hanging charcuterie; standard finish satin-finished steel, epoxy powder coated steel RAL 7021 or RAL 9010, optional finishes: epoxy powder coating, electroplating.

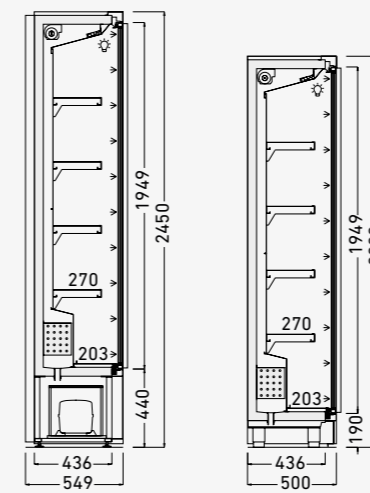


Shelf_T9

Tempered glass shelf adjustable on polished steel rack profiles; set-up valid only for Exclusive 74P and 74S with Premium doors without central mullion.
Dim.: 1150x400 mm
Capacity: max 70 bottles.

EXCLUSIVE 51P

Refrigerated wall cabinet at positive temperature (+ 4 °C) | molded heat-insulated tank made of ecological polyurethane coated with AISI 304 s/s | wall system with fan ventilated refrigeration system on all display levels | automatic defrost | available with remote or built-in hermetic condensing unit | digital control panel | s/s sides | 'zero' flush-mounted doors with RAL 7021 screen printing | bottom tray in back-painted glass | back in epoxy powder coated steel RAL 7021 | shelves in epoxy powder coated steel RAL 7021 adjustable on rack rod | indirect lighting incorporated on the door frame with no spot 3000°K strip-LED | base of counter in s/s | s/s feet adjustable in height.



Technical

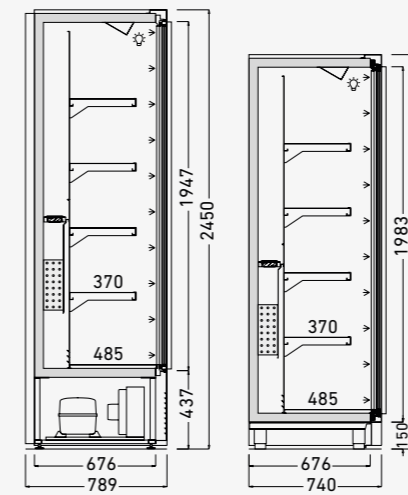
| | | | |
|--|--------------------|--|-----------------------|
| | Ventilated | | Automatic/electrical |
| | R452A | | N. 4 / H.R. 55% 30 °C |
| | Hermetic | | +4°C / +8°C |
| | LED no-spot 3000°K | | 230 V / 1 ph / 50 Hz |

Technical features (built-in compressor)

| Model Code | Dimensions mm | Weight Kg | Max Pwr. Consumption W / A | Avg Operating Consumption KW/H | Cooling Power/Expansion W / °C | GAS Type |
|--------------|--------------------|-----------|----------------------------|--------------------------------|--------------------------------|----------|
| EXL51PPVT6I | 680x549x2450H | 150 | 1000 / 5.9 | 0.6 | 700 / -16 | R452A |
| EXL51PPVT12I | 1280x549x2450H | 270 | 1350 / 7.0 | 0.9 | 1000 / -16 | R452A |
| EXL51PPVT18I | 1880x549x2450H | 360 | 1800 / 8.9 | 1.2 | 1300 / -16 | R452A |
| EXL51PPVT24I | 2480x549x2450H | 410 | 2000 / 11.0 | 1.4 | 1600 / -16 | R452A |

EXCLUSIVE 74P

Refrigerated wall cabinet at positive temperature (+ 4 °C) | molded heat-insulated tank made of ecological polyurethane coated with AISI 304 s/s | wall system with fan ventilated refrigeration system on all display levels | available with remote or built-in hermetic condensing unit | automatic defrost | digital control panel | s/s sides | 'zero' flush-mounted doors with RAL 7021 screen printing | bottom tray in backpainted glass | back in powder coated steel RAL 7021 | shelves in epoxy powder coated steel RAL 7021 adjustable on rack rod | indirect lighting incorporated on the door frame with no spot 3000°K strip-LED | base of counter in s/s | s/s feet adjustable in height.



Technical

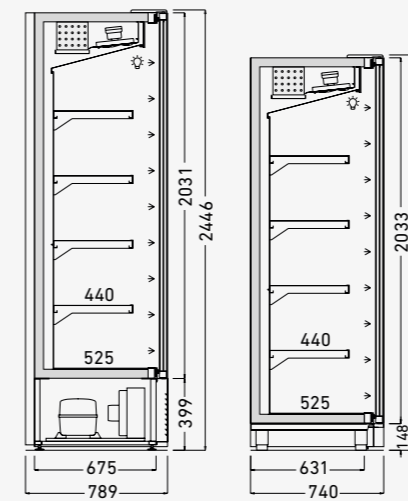
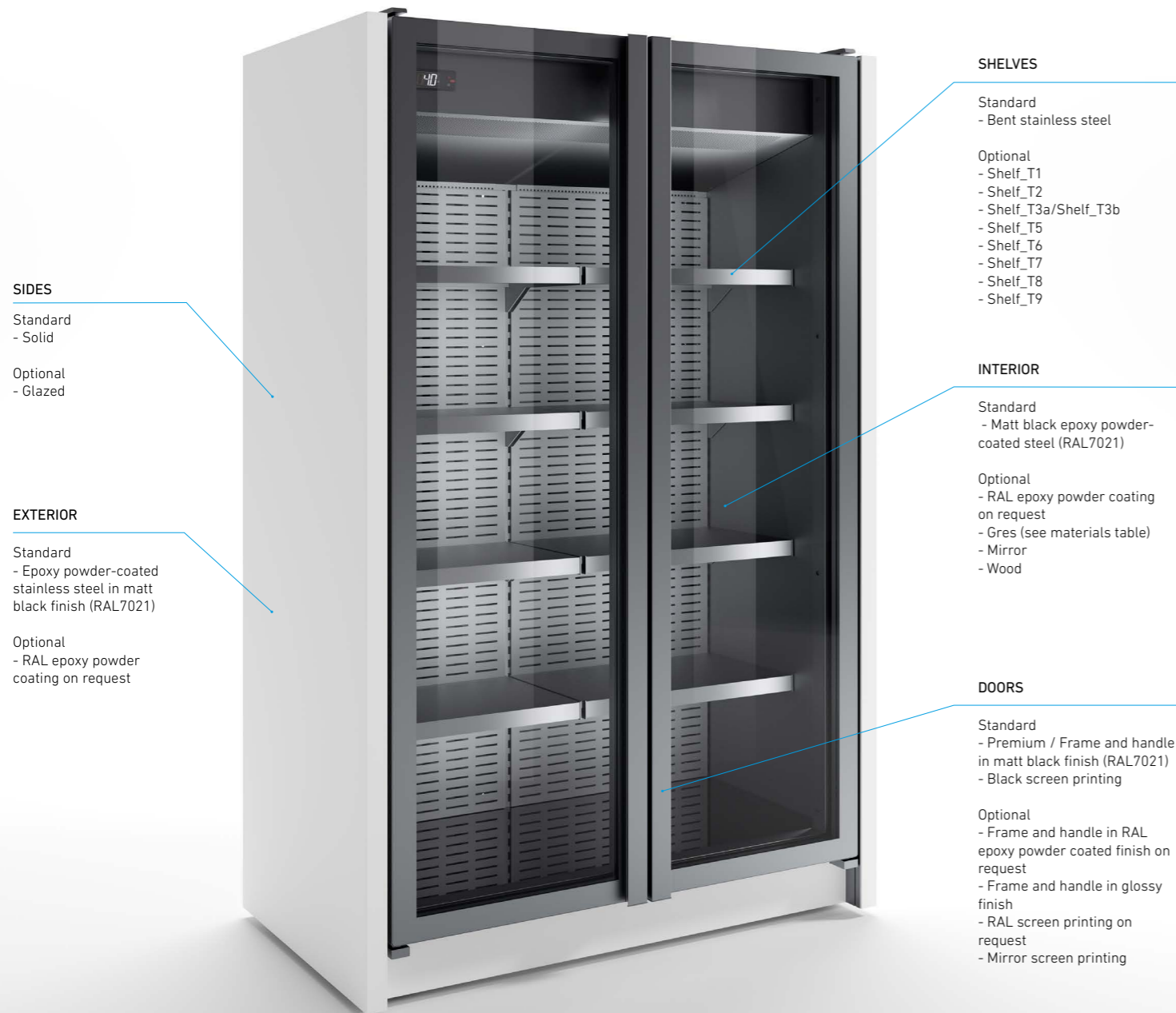
| | | | |
|--|--------------------|--|-----------------------|
| | Ventilated | | Automatic/electrical |
| | R452A | | N. 4 / H.R. 55% 30 °C |
| | Hermetic | | +2°C / +8°C |
| | LED no-spot 3000°K | | 230 V / 1 ph / 50 Hz |

Technical features (built-in compressor)

| Model Code | Dimensions mm | Weight Kg | Max Pwr. Consumption W / A | Avg Operating Consumption KW/H | Cooling Power/Expansion W / °C | GAS Type |
|--------------|--------------------|-----------|----------------------------|--------------------------------|--------------------------------|----------|
| EXL74PPVT6I | 680x789x2450H | 180 | 1050 / 5.9 | 0.6 | 850 / -13 | R452A |
| EXL74PPVT12I | 1280x789x2450H | 300 | 1350 / 7.1 | 0.9 | 1300 / -13 | R452A |
| EXL74PPVT18I | 1880x789x2450H | 400 | 1800 / 8.0 | 1.2 | 1700 / -13 | R452A |
| EXL74PPVT24I | 2480x789x2450H | 500 | 2000 / 11.0 | 1.3 | 2100 / -13 | R452A |

EXCLUSIVE 74S POSITIVE TEMPERATURE

Refrigerated wall cabinet at positive temperature (+ 4 °C) | molded heat-insulated tank made of ecological polyurethane coated with AISI 304 s/s | ceiling system with fan ventilated refrigeration system on all display levels | available with remote or built-in hermetic condensing unit | automatic defrost | digital control panel | s/s sides | 'premium' doors without central with RAL 7021 screen printing and additional lighting integrated on the door | bottom tray in back-painted glass | back in epoxy powder coated steel RAL 7021 | shelves in epoxy powder coated steel RAL 7021 adjustable on rack rod | indirect lighting incorporated on the door frame with no spot 3000°K strip-LED | base of counter in s/s | s/s feet adjustable in height.



Technical

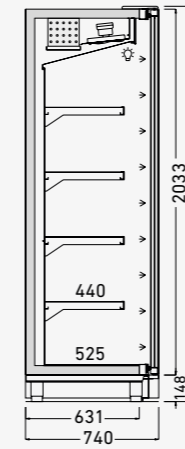
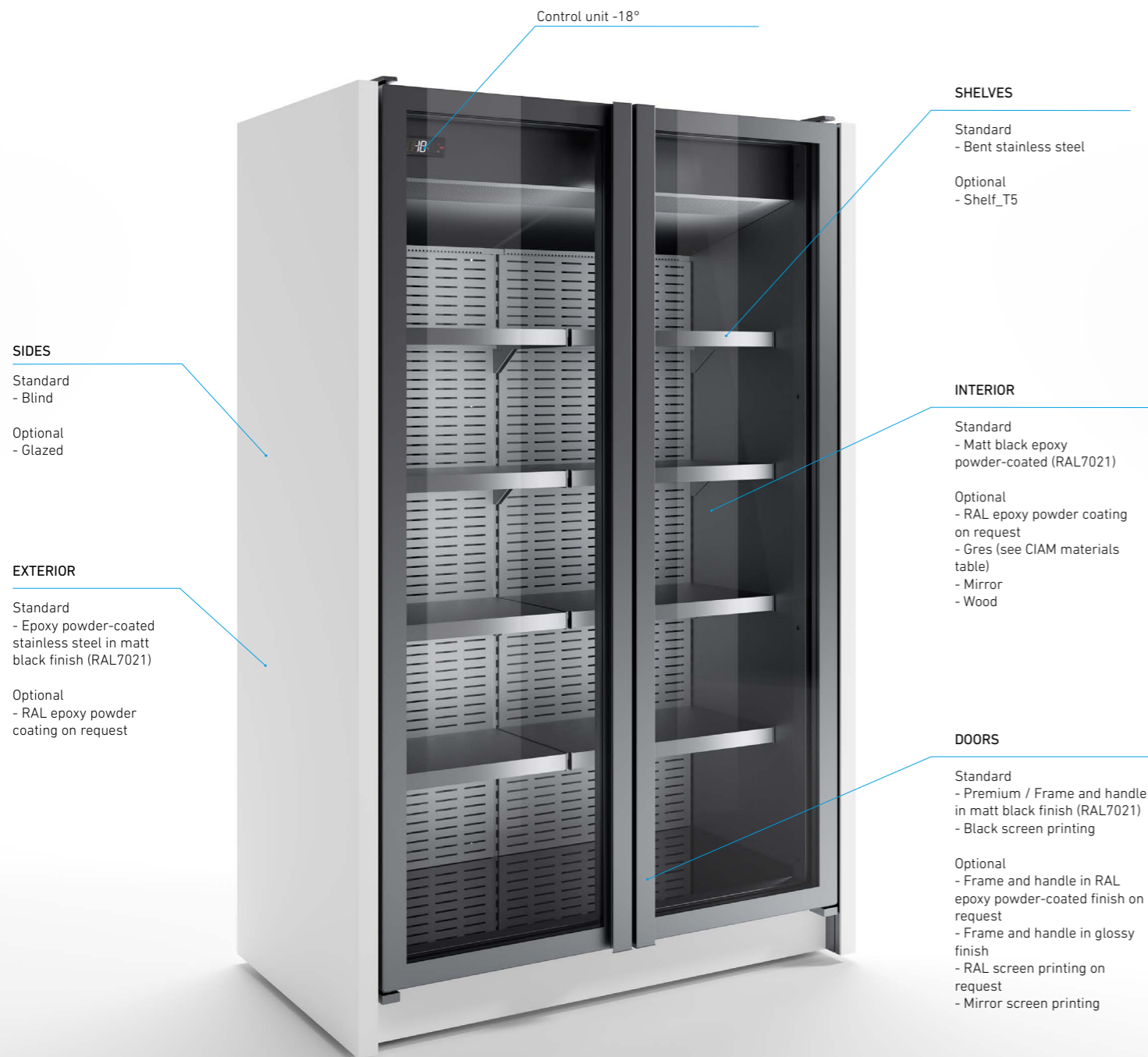
| | | | |
|--|--------------------|--|------------------------|
| | Ventilated | | Automatic/electrical |
| | R452A | | N. 4 / H.R. 55% 30 °C |
| | Hermetic | | +2 / +8°C |
| | LED no-spot 3000°K | | 400 V / 3 ph / 50 Hz+N |

Technical features (built-in compressor)

| Model Code | Dimensions mm | Weight Kg | Max Pwr. Consumption W / A | Avg Operating Consumption KW/H | Cooling Power/Expansion W / °C | GAS Type |
|--------------|--------------------|-----------|----------------------------|--------------------------------|--------------------------------|----------|
| EXL74SPVT6I | 700x789x2446H | 180 | 1000 / 5,9 | 0,55 | 900 / -10 | R452A |
| EXL74SPVT12I | 1300x789x2446H | 180 | 1300 / 7,0 | 0,8 | 1350 / -10 | R452A |
| EXL74SPVT18I | 1900x789x2446H | 400 | 1750 / 8,9 | 1,1 | 1800 / -10 | R452A |
| EXL74SPVT24I | 2500x789x2446H | 500 | 1950 / 10,5 | 1,3 | 2300 / -36 | R452A |

EXCLUSIVE 74S LOW TEMPERATURE

Refrigerated wall cabinet at low temperature (-18°C) | molded heat-insulated tank made of ecological polyurethane coated with AISI 304 s/s | ceiling system with fan ventilated refrigeration system on all display levels | remote hermetic condensing unit | automatic defrost | digital control panel | s/s sides | 'premium' doors without central mullion with RAL 7021 screen printing and additional lighting integrated on the door | bottom tray in back-painted glass | back in powder coated steel RAL 7021 | shelves in powder coated steel RAL 7021 adjustable on rack rod | indirect lighting incorporated on the door frame with no spot 3000°K strip-LED | base of counter in s/s | s/s feet adjustable in height.



Technical

| | | | |
|--|--------------------|--|-------------------------|
| | Ventilated | | Automatic/reverse cycle |
| | R452A | | N. 4 / H.R. 55% 30 °C |
| | Semi-Hermetic | | -18°C |
| | LED no-spot 3000°K | | 400 V / 3 ph / 50 Hz+N |

Technical features (remote compressor)

| Model Code | Dimensions mm | Weight Kg | Max Pwr. Consumption W / A | Avg Operating Consumption KW/H | Cooling Power/Expansion W / °C | GAS Type |
|--------------|----------------------------------|------------|----------------------------|--------------------------------|--------------------------------|----------|
| EXL74SGEL6E | 700x740x2196H 880x920x2486H | 180 100 | 2100 / 4.6 | 0.9 | 900 / -36 | R452A |
| EXL74SGEL12E | 1300x740x2196H 1480x920x2486H | 300 170 | 3600 / 7.1 | 1.6 | 1300 / -36 | R452A |
| EXL74SGEL18E | 1900x740x2196H 2080x920x2486H | 500 240 | 4500 / 15.5 | 2.0 | 1700 / -36 | R452A |
| EXL74SGEL24E | 2500x740x2196H 2680x920x2486H | 500 310 | 5500 / 17.5 | 2.3 | 2000 / -36 | R452A |

EXCLUSIVE 74MA MEAT DRY AGING

Refrigerated wall cabinet at positive temperature (+ 2°C) for meat dry aging | molded heat-insulated tank made of ecological polyurethane coated with AISI 304 s/s | ceiling system with ventilated refrigeration with finned evaporator and electronic valve, integrated humidification and bacterial reduction system | automatic defrosts | n.03 height adjustable shelves in satin stainless steel | available with remote or built-in hermetic condensing unit | touch panel with meat dry aging programs that can be recorded and monitored by the operator | s/s sides | 'Premium' doors without central mullion with RAL 7021 screen printing and additional lighting integrated on the door | bottom tray and back in satin stainless steel | shelves in satin stainless steel adjustable on rack rod | indirect lighting incorporated on the door frame with no spot 3000°K strip-LED | base of counter in s/s | s/s feet adjustable in height.



SIDES

- Standard - Solid
- Optional - Glazed

EXTERIOR

- Standard - Epoxy powder-coated stainless steel in matt black finish (RAL7021)
- Optional - RAL epoxy powder coated on request

SHELVES

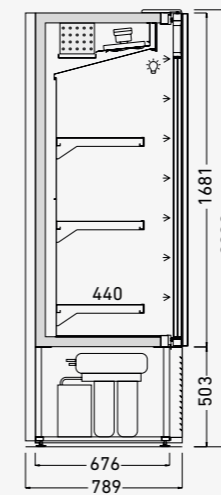
- Standard - Brushed stainless steel
- Optional - Shelf_T5 - Shelf_T8

INTERIOR

- Standard - Brushed stainless steel
- Optional - Epoxy powder-coated in matt black (RAL7021) - RAL epoxy powder coating on request

DOORS

- Standard - Premium / Frame and handle in matt black finish (RAL7021) - Black screen printing
- Optional - Frame and handle in RAL epoxy powder coated finish on request - Frame and handle in glossy finish - RAL screen printing on request - Mirror screen printing



Technical

| | | | |
|--|--------------------|--|-----------------------|
| | Ventilated | | Automatic |
| | R452A | | N. 4 / H.R. 55% 30 °C |
| | Hermetic | | +2°C |
| | LED no-spot 3000°K | | 230 V / 1 ph / 50 Hz |

Technical features (built-in compressor for L1300 and L1900)

| | Model Code | Dimensions mm | Weight Kg | Max Pwr. Consumption W / A | Avg Operating Consumption KW/H | Cooling Power/Expansion W / °C | GAS Type |
|--|-------------|----------------------------------|------------|----------------------------|--------------------------------|--------------------------------|----------|
| | EXL74MAT6E | 700x789x2200H 880x969x2490H | 190 110 | 1600 / 8.2 | 1.0 | 1000 / -10 | R452A |
| | EXL74MAT12I | 1300x789x2200H 1480x969x2490H | 320 180 | 3600 / 13.5 | 1.4 | 1450 / -10 | R452A |
| | EXL74MAT18I | 1900x789x2200H 2080x969x2490H | 410 255 | 4500 / 17.0 | 1.8 | 1900 / -10 | R452A |

CIAM